

Process

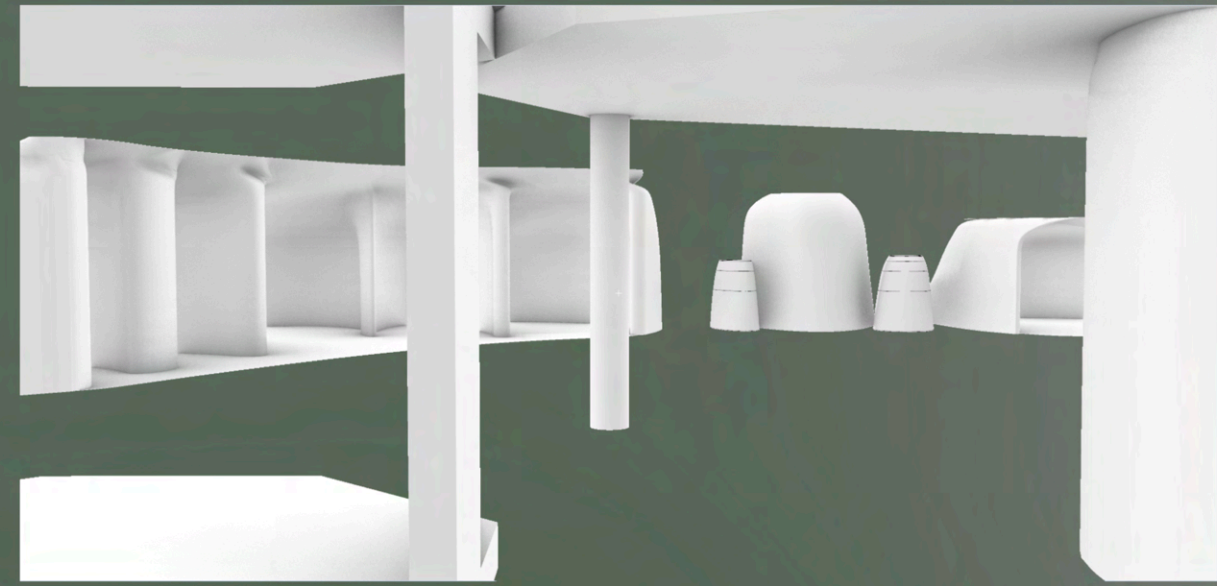
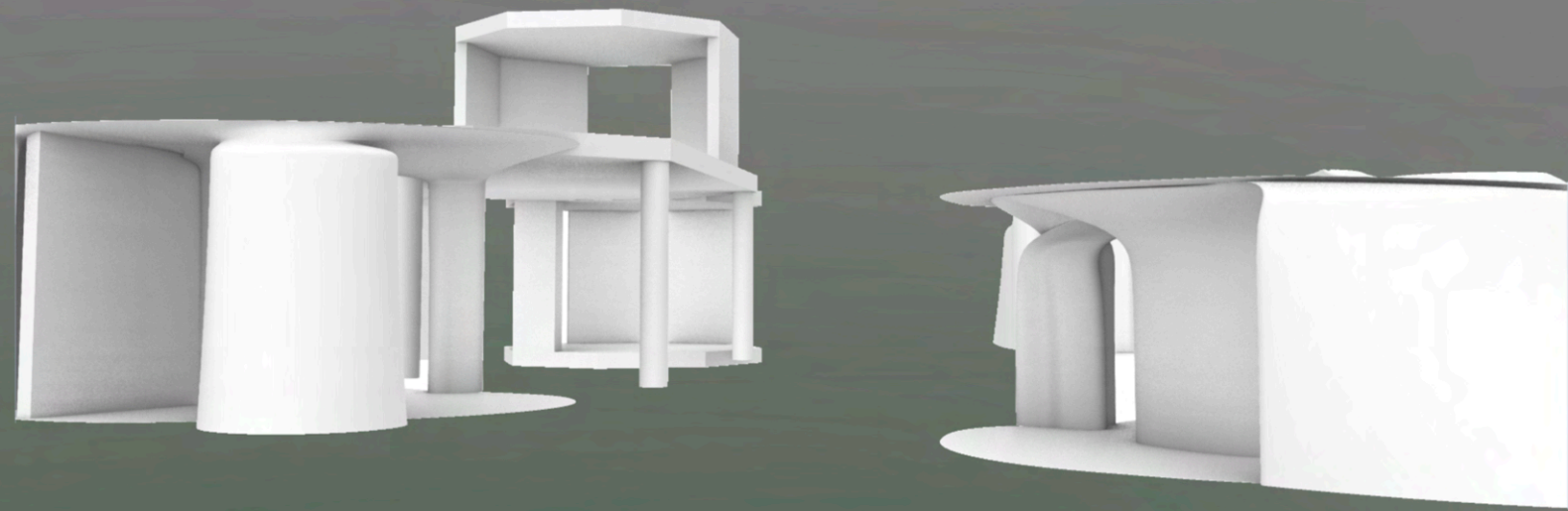
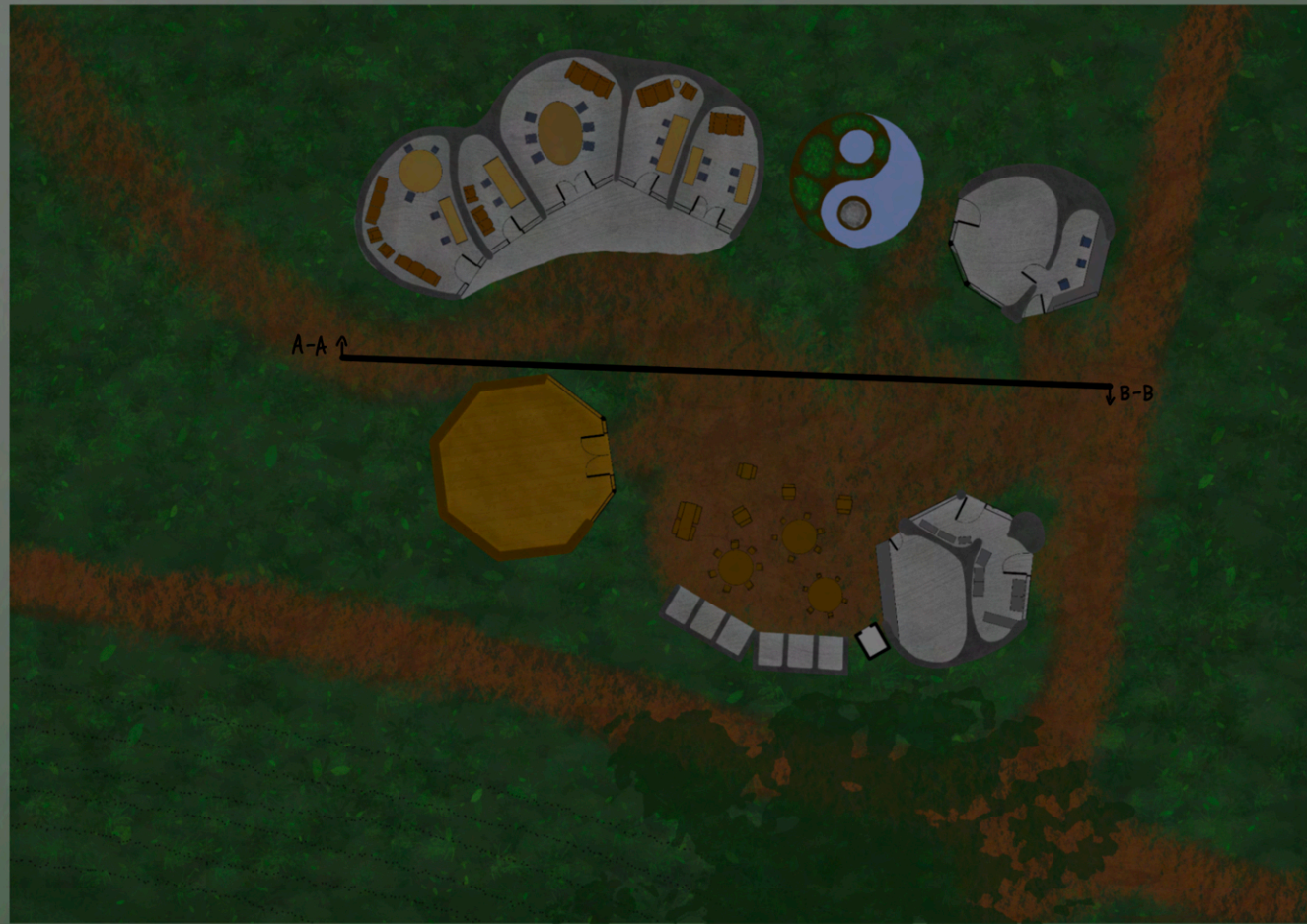


Design Resolution #2

1st Floor Plan



Ground Floor Plan



S
e
c
t
i
o
n
s

A-A



B-B

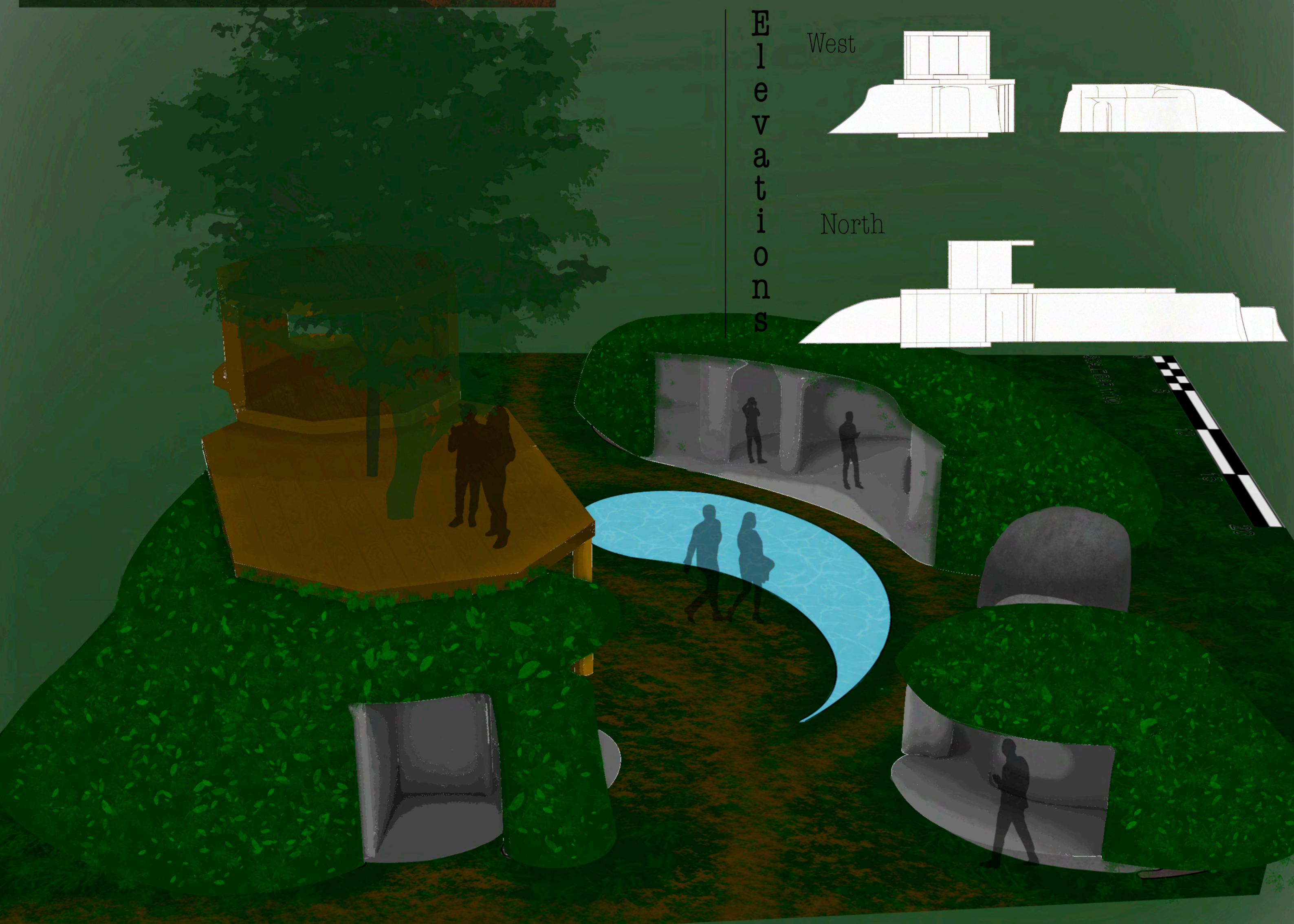
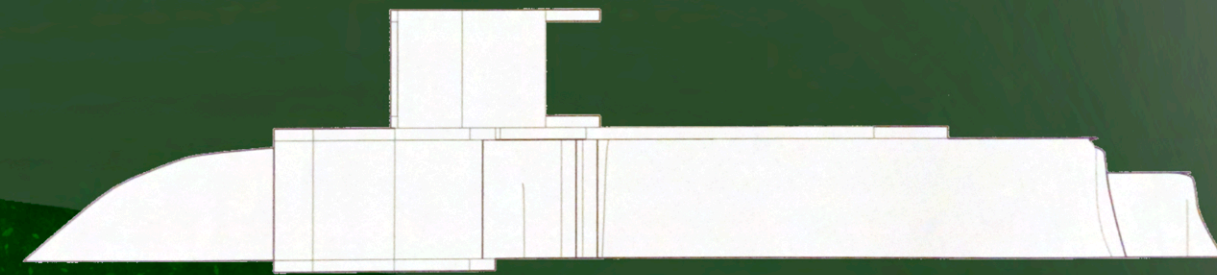


E
l
e
v
a
t
i
o
n
s

West



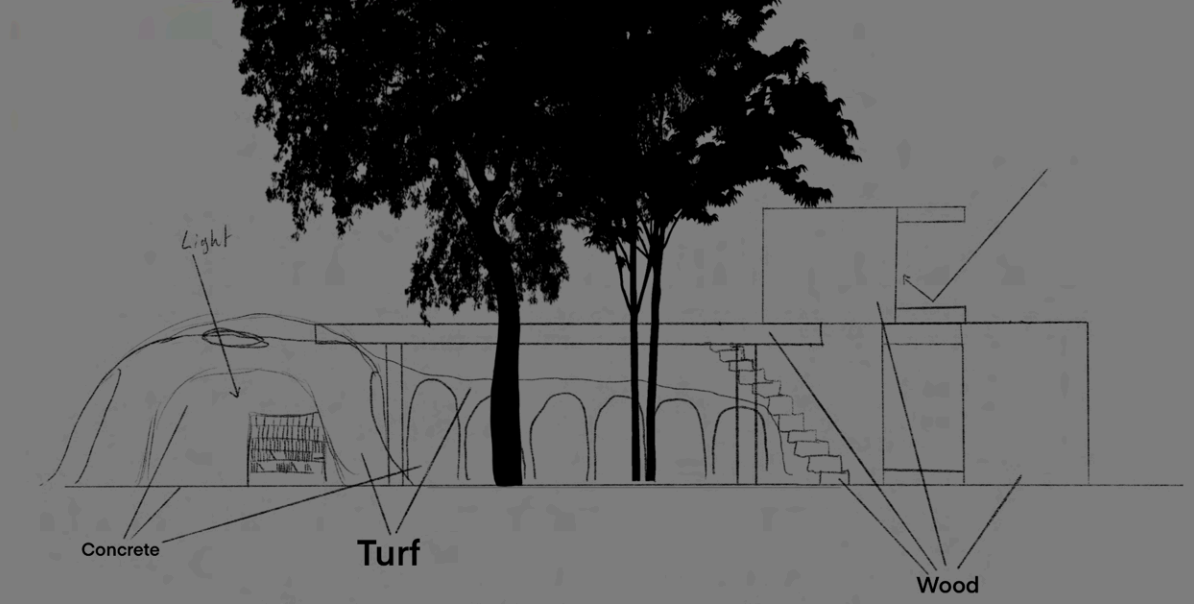
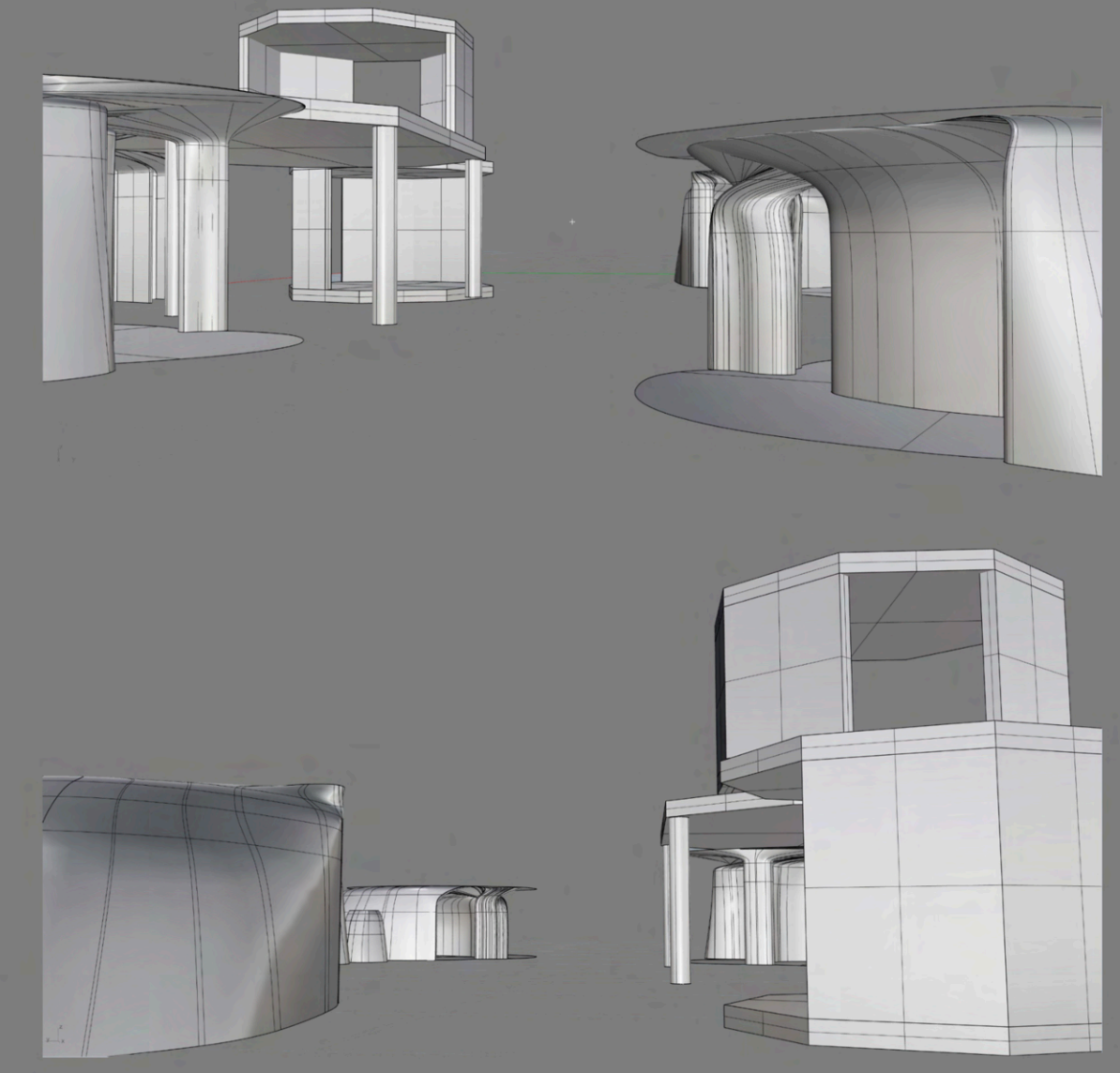
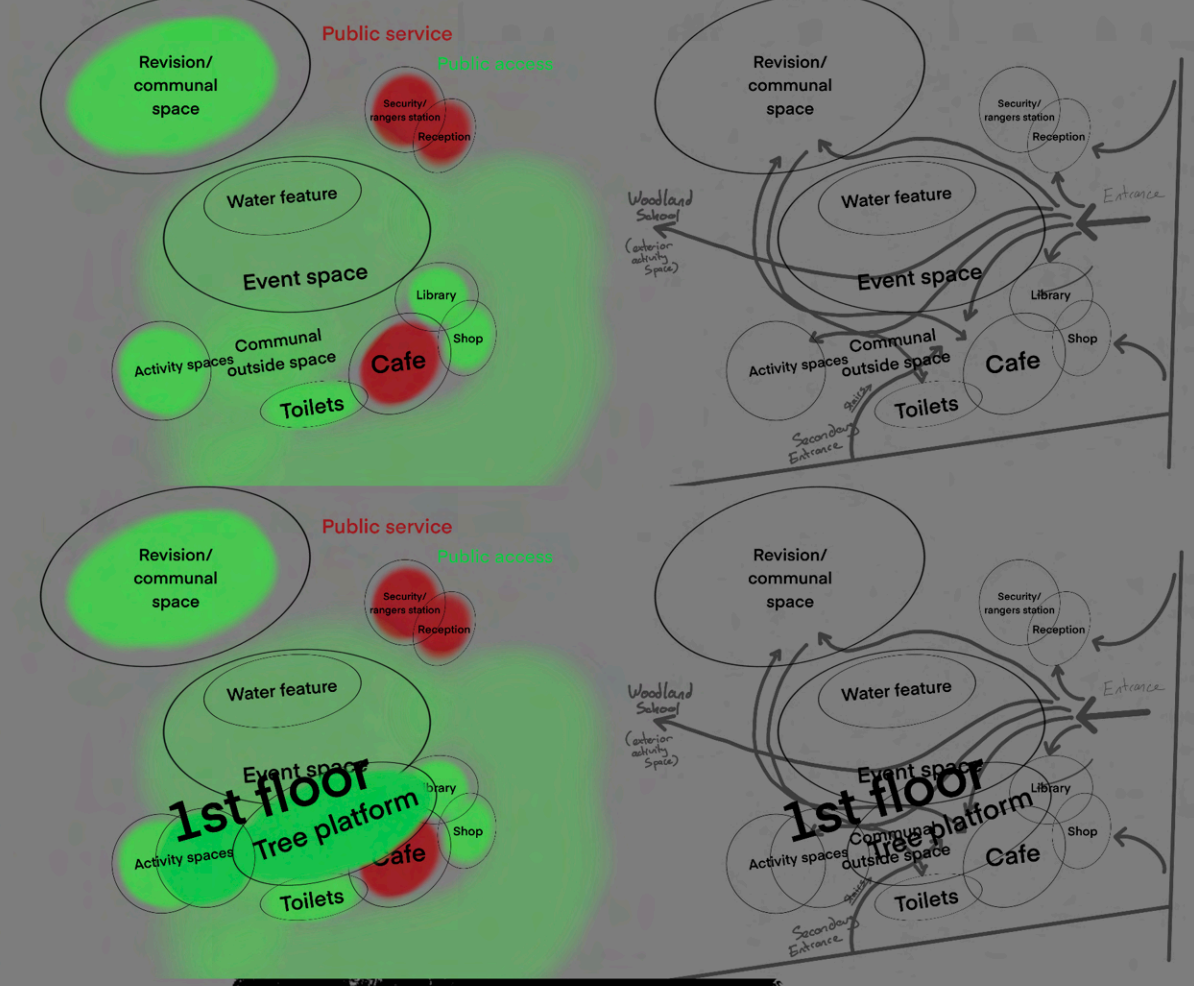
North



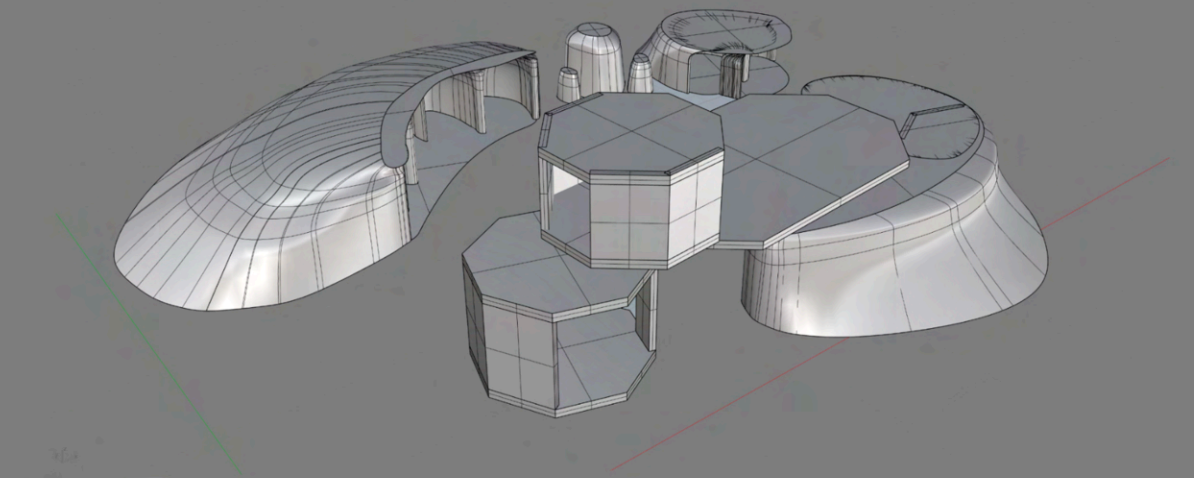
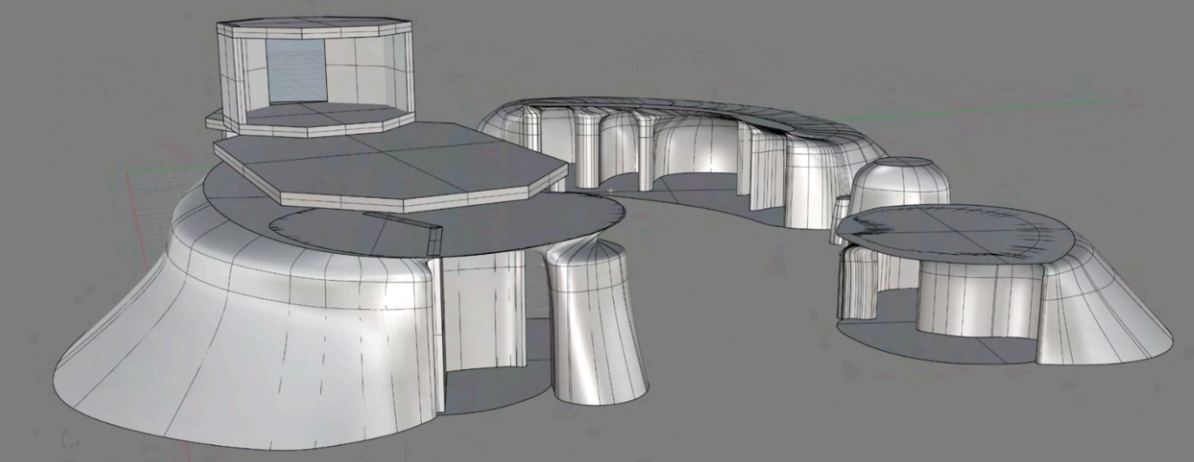
Design Resolution #1

Adjacency diagram

Circulation Diagram



Sectional/Material Diagram

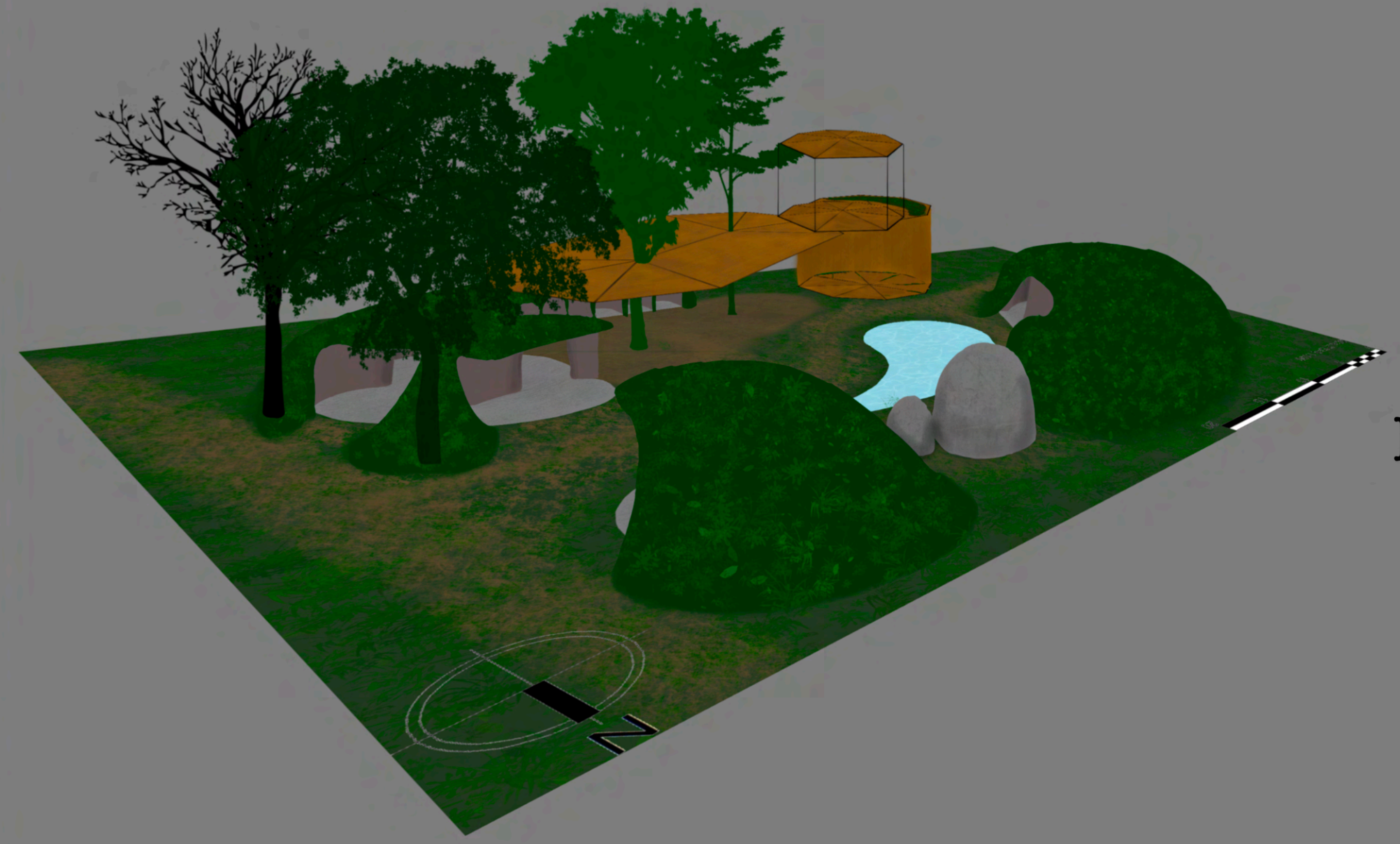
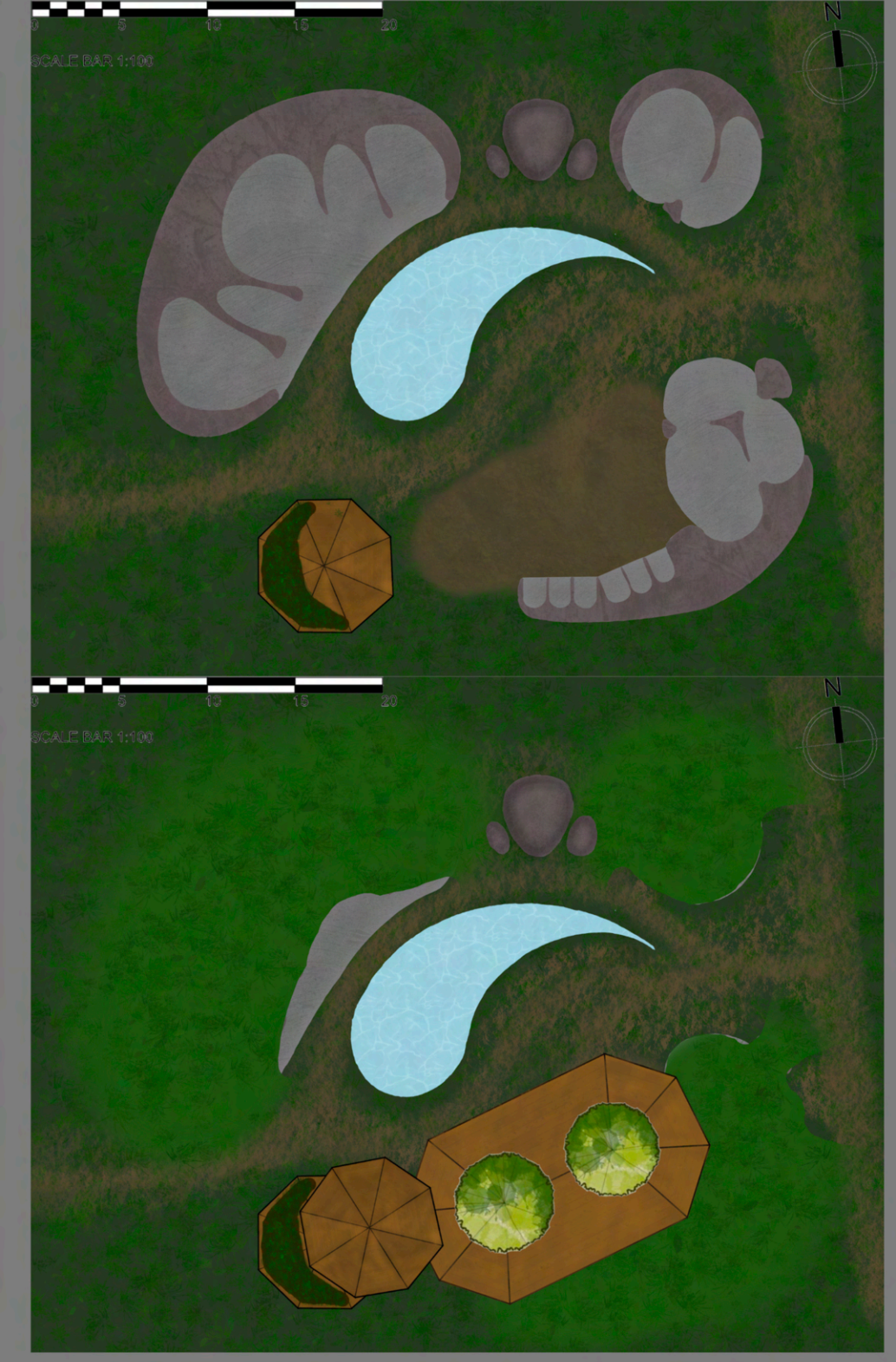


Perspectives



Scale 1:500

Plans



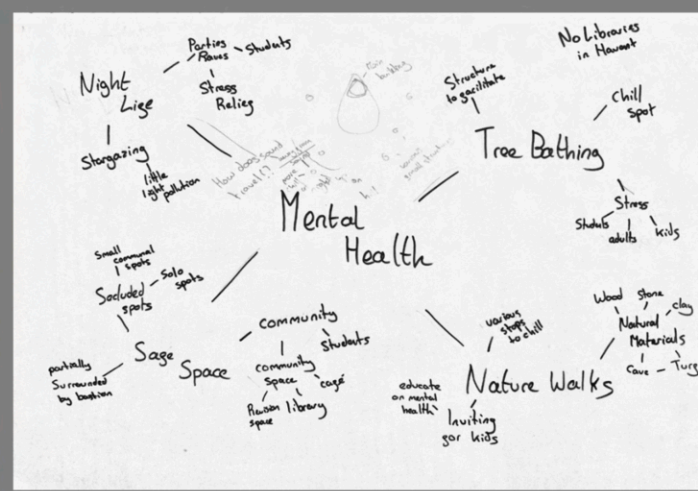
Landscape, Trails & Landmarks

Interest



My main focus and intent for my pavilion is to assist the Casemates studios located in bastion 4

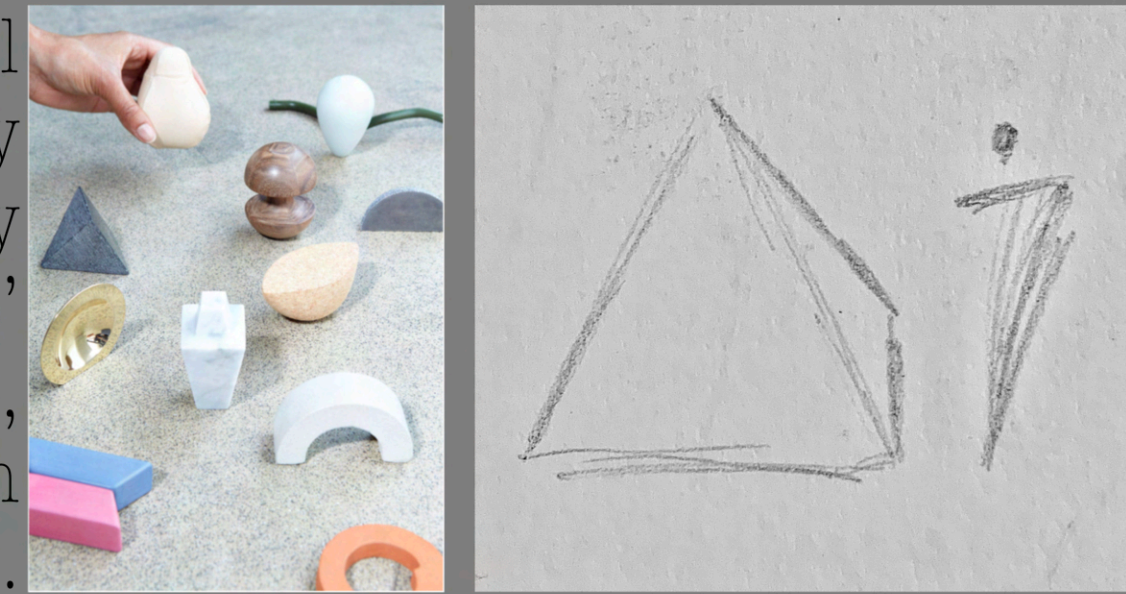
Theme



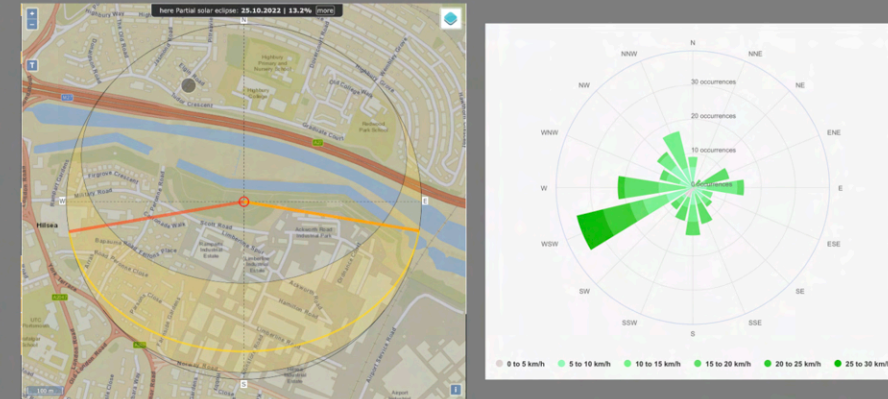
I have a focus on mental health aimed at primarily students

Landmarks

My landmarks will be abstractly shapes inspired by Nicolette Bodewes' therapy toolkit, based on Jungian Archetypes.



Site Analysis

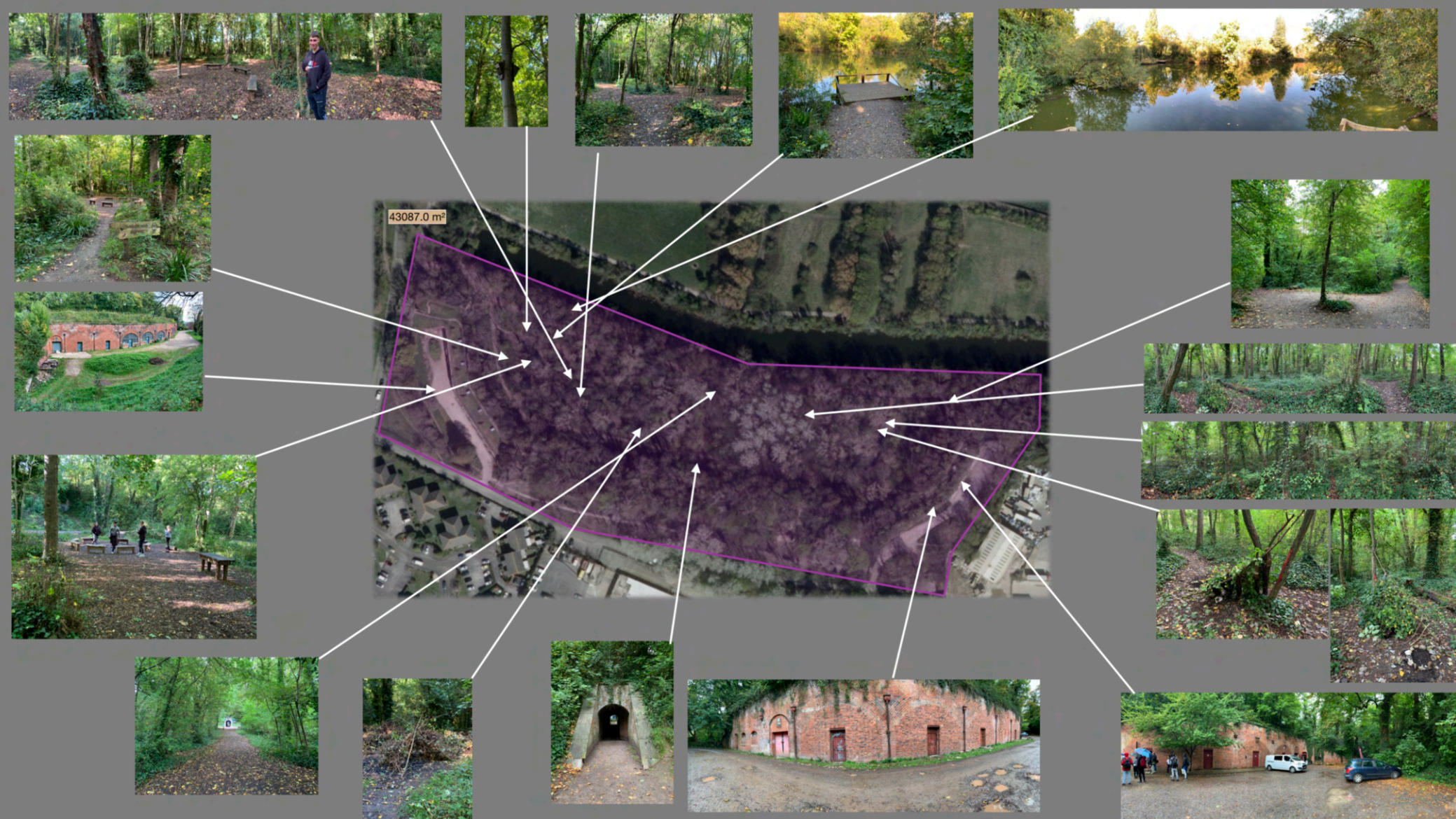


3D scan of forested paths next to, and linking to my building



- Existing Trails
- Bastion Trails
- Proposed Trails

Discoveries



Trails

