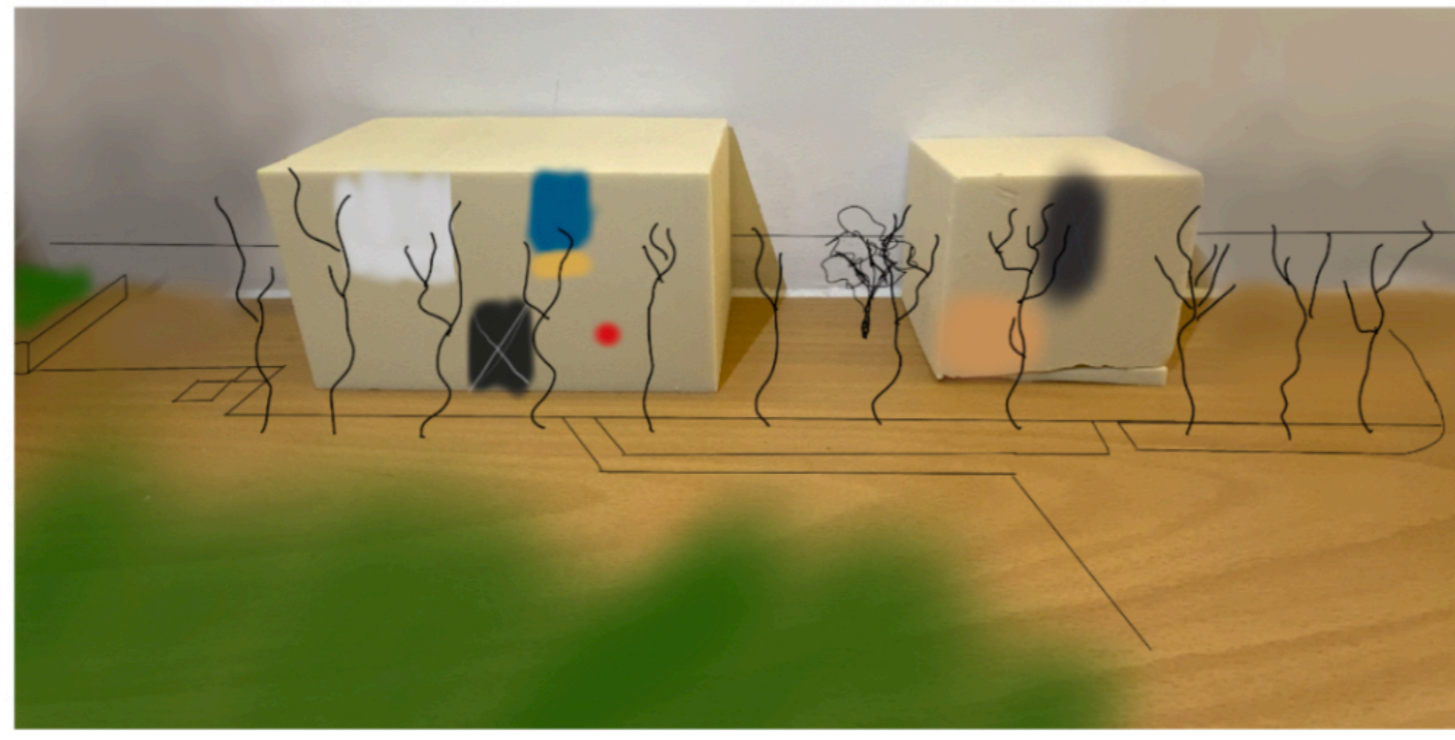
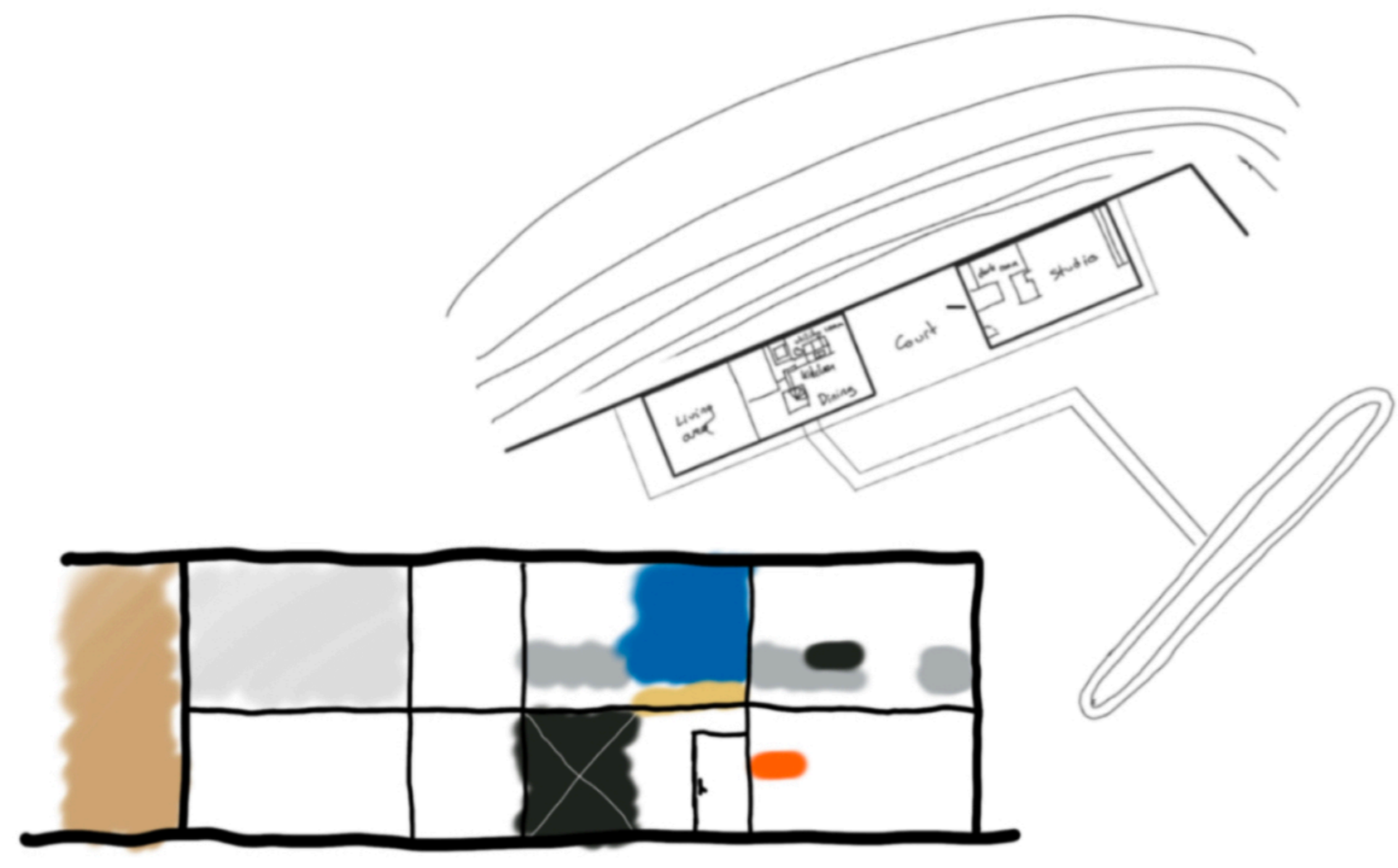


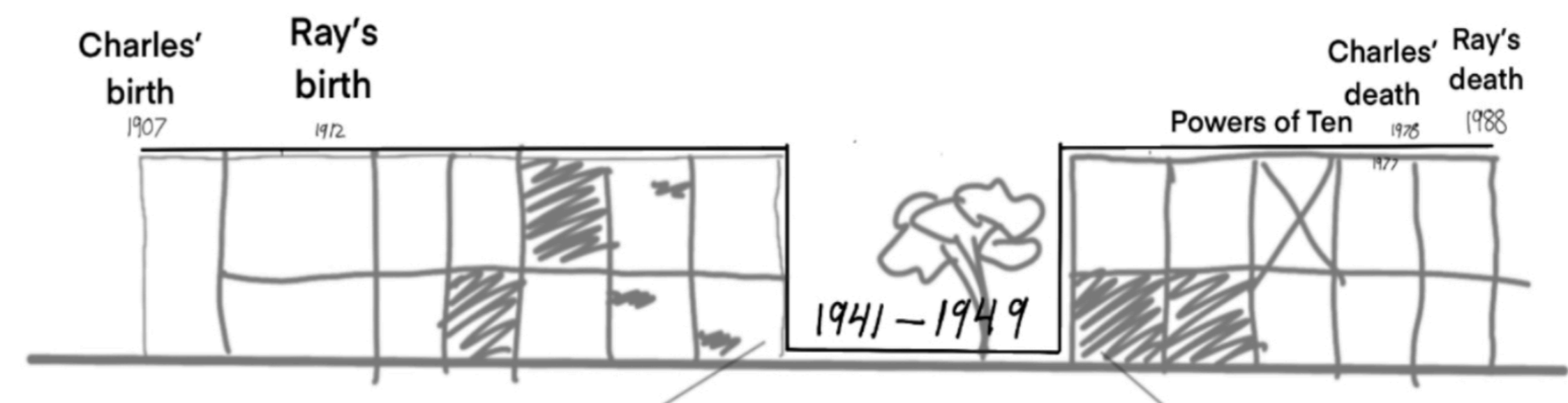
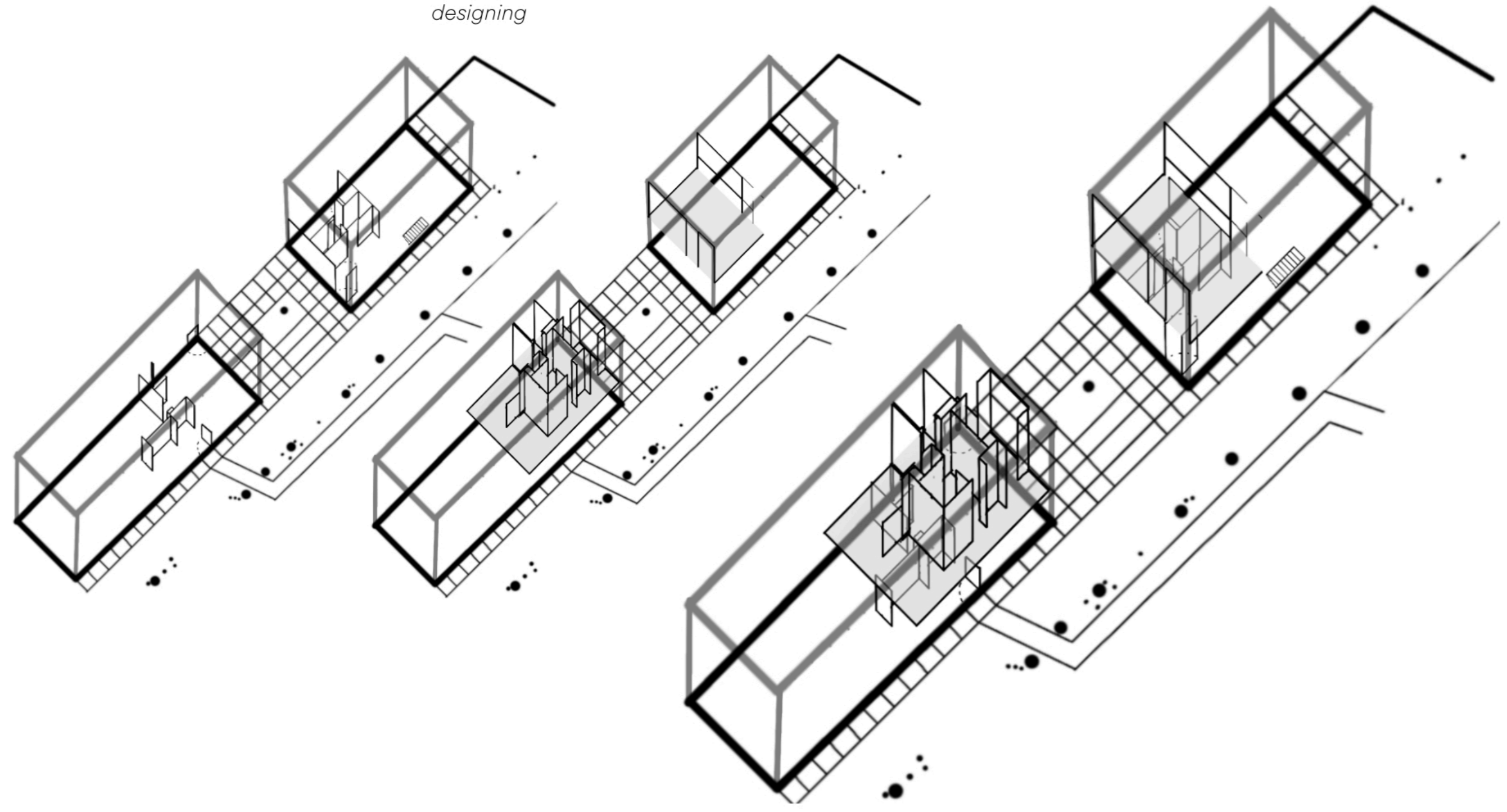
# EAMES HOUSE



## Influences/Inspirations

- Clear DeStijl influence (colour scheme from Ray)
- Biophilic design & sustainability
- Economic design

*House was meant to be an example of minimal cost economic designing*



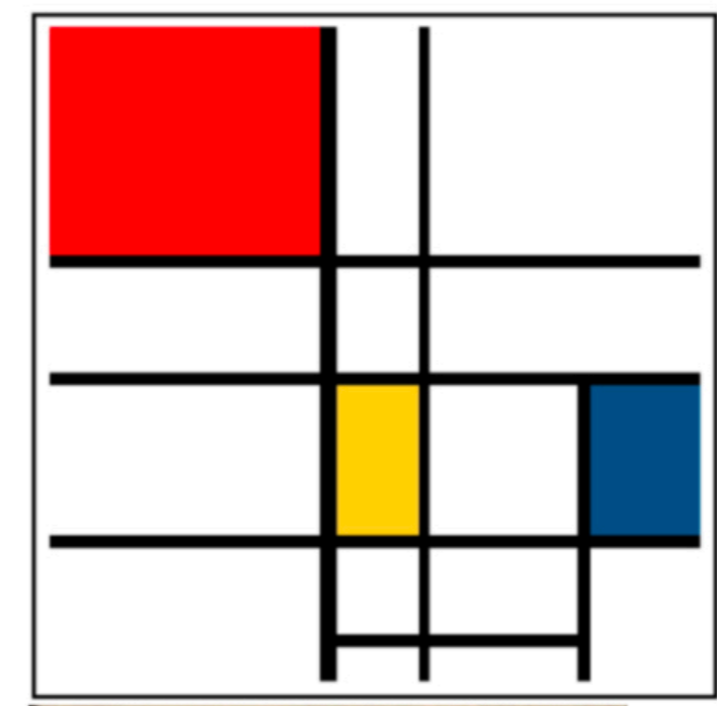
1941 Married Ray Eames

1940s Organic Design in Home Furnishings award with Eero Saarinen

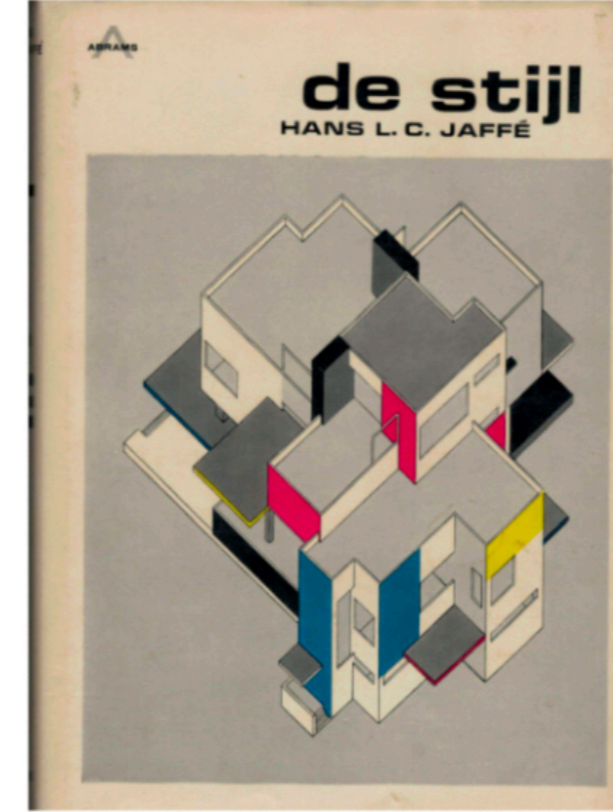
1942 ish flexible plywood splint for soldiers in WW2

ECW (Eames Chair Wood) created 1946

1949 Eames House/ Case Study #8



Eliel Saarinen was said to be a large influence on Eames, he was also a professor at the Cranbrook academy of arts, where Eames studied and also met Ray



De Stijl seems to be a clear influence on the houses design, through its colour palette and its blocky modular design



# Eames House

- Building is squeezed <sup>Eames design: the work of the office or Charles & Ray Eames</sup>
- Structure is a modular system resulting in cubelike spaces in the living room

Year of house completion: 1949, land reached 2006

Architects: Charles & Ray Eames <sup>ecomes foundation</sup>

City/Country of completion: LA, Pacific Palisades

Client: John Entenza (publisher of arts & architecture magazine) <sup>entent AD</sup>

Context Character: Forested area on a steep landscape

Eames' inspiration: They both found inspiration in each other, but Charles was inspired by Eliel Saarinen. Sustainability & biophilic design along with materials, processes & economical design

Antonia Lowe Interiors

Key principles: Described as 'unselfconscious'. Believed in the honest use of materials & straightforward connections. Intent was for the house in nature to be seen as a re-orienter quest / most relationship, <sup>ecomes foundation</sup>

Iterative process that leads to meeting the need, the importance of direct experience, the relation with nature, life in work & work in life, importance of detail & more.

what core before or after

Eames house influence: Seems to be a clear DeStijl influence <sup>interdisciplinary influences</sup> especially with colour scheme (Ray Eames), cubic design, bare framework

